



evezor

Mechanize
Automate
Entertain

Evezor Inc.
3519 Elston Ave
Chicago, IL 60618

eve@vezor.com
<https://vezor.com>

Table of contents

Part one

• Evezor Edge System	6
• Code Easily With Edge IDE	7

Boards

• RFID Board	8
• CNC Controller Board	9
• CNC Controller Expando Board	10
• Neo Strip Board	11
• Neo Hex Board	12
• HX711 Load Sensor Board	13
• Numberpad Board	14
• Real Time Clock Board	15
• Qr Code Reader Board	16
• 4x Relay Board	17
• 8x Servo Board	18
• Stack Light Board	19
• Thermocouple Board	20
• DRV8801 Motor Driver Board	21
• Joypad Board	22
• Small Mosfet Board	23
• Pi Hat Board	24
• Zorg Board	25
• 16x2 LCD Board	26
• Analog IO Board	27
• Dpad Board	28

• DMX with Real Time Clock Board	29
• PNP Feeder Board	30
• 3A Regulator Board	31
• 2A Regulator Board	32
• 3D Printhead Board	33
• Camera Board	34
• Coms Board	35
• FTDI Board	36
• Small Motor Driver Board	37
• Opto IO Board	38

Evezor Edge System



4 5

Evezor is here to help you create the extraordinary

With Evezor's low/ no code tools you can quickly mock prototypes. Then with Python under the hood the possibilities are endless.

Use Evezor's Edge Boards to take the pain out of making electronics and programming hardware. Each module comes pre-programmed with the most use cases allowing you to move as fast as you can.

Finding libraries and creating glue code are a thing of the past. With Evezor IDE simply drag and drop and all dependencies are taken care of. Know you have the most up to

date code and easily integrate any device into your project.

Evezor has a huge variety of devices to meet your needs. From buttons and actuators to motors and relays. Sense weights and pressures, react to temperatures. Build machines, robots, and entertainment productions. Evezor has you covered.

Evezor has a huge variety of devices to meet your needs. From buttons and actuators to motors and relays. Sense weights and pressures, react to temperatures. Build machines, robots, and entertainment productions. Evezor has you covered.

Code Easily With Edge IDE

We present you Edge IDE a low/ no code programming environment created to get you moving quickly



Build Quickly

With a suite of prebuilt options. Find the devices you need.



Program Fast

Simply connect sensors, actuators and logic with simple lines.



Auto Generated Web Interfaces

Create rich web interfaces and GUIs with Evezor IDE. Simply drag gui elements onto your canvas to automatically



Move With Speed

Build your thing with the inputs and outputs you know you need. Then sort out the details with Python.

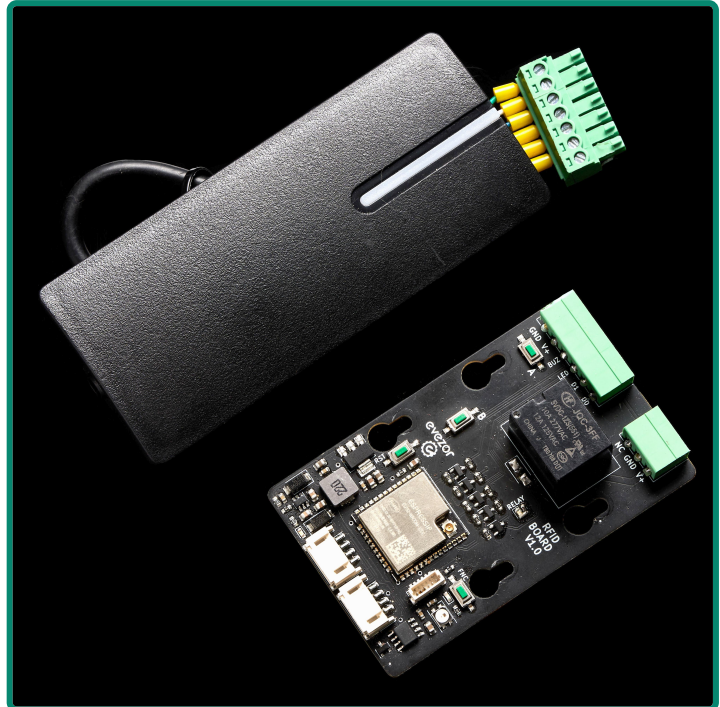


Programmed with Python

With all the easy to use features we offer we would never take away the option to write some raw python. We know that code makes the best code.

RFID Board

Use the RFID board to give your project access control, to track inventories and more.

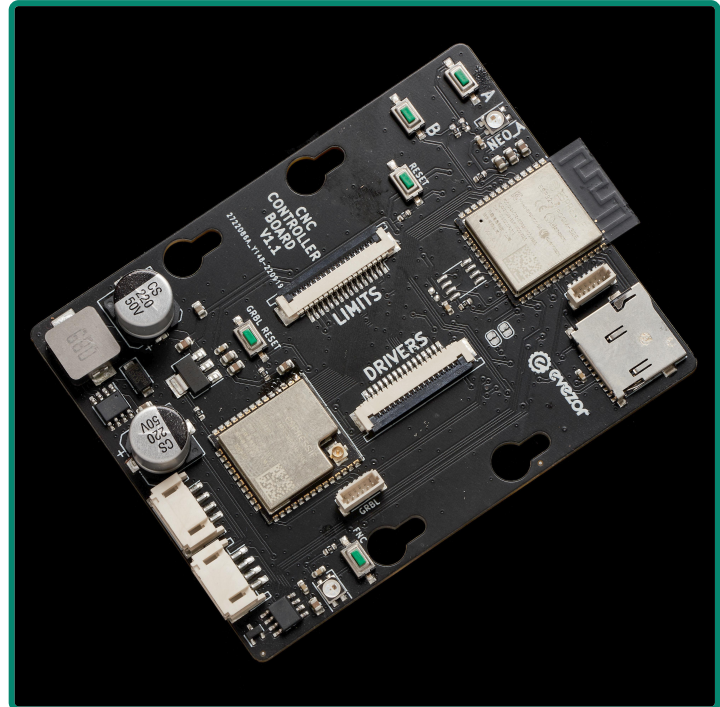


Features

- 125kHz RFID Reader
 - Relay
 - qty(2) User Programmable Tactile Buttons
 - Standard Edge Board Components
 - WIFI
 - qty(2) Edge CAN Network Ports
 - Function Button
 - Status NeoPixel
 - Hearbeat LED
-

CNC Controller Board

Use the CNC controller board to control mills, 3d printers, robot arms or any other motion platform that requires precision control with stepper motors

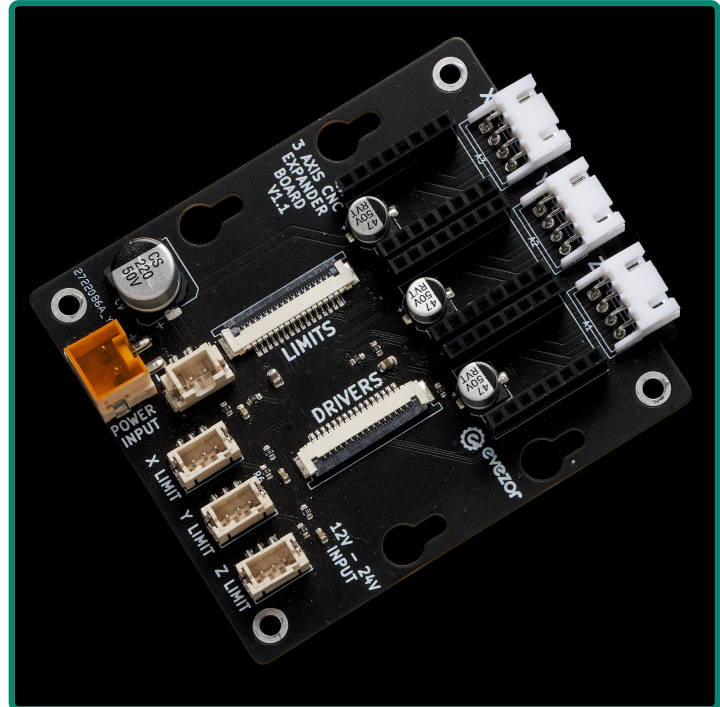


Features

- Motion control core running FluidNC
 - Ribbon cable expansion ports
 - SDCard slot
 - qty(2) User programmable tactile buttons
 - 8 Mb PSRAM
 - Standard Edge Board Components
 - WIFI
 - qty(2) Edge CAN Network Ports
 - Function Button
 - Status NeoPixel
 - Hearbeat LED
-

CNC Controller Expando Board

Use the CNC controller board to control mills, 3d printers, robot arms or any other motion platform that requires precision control with stepper motors

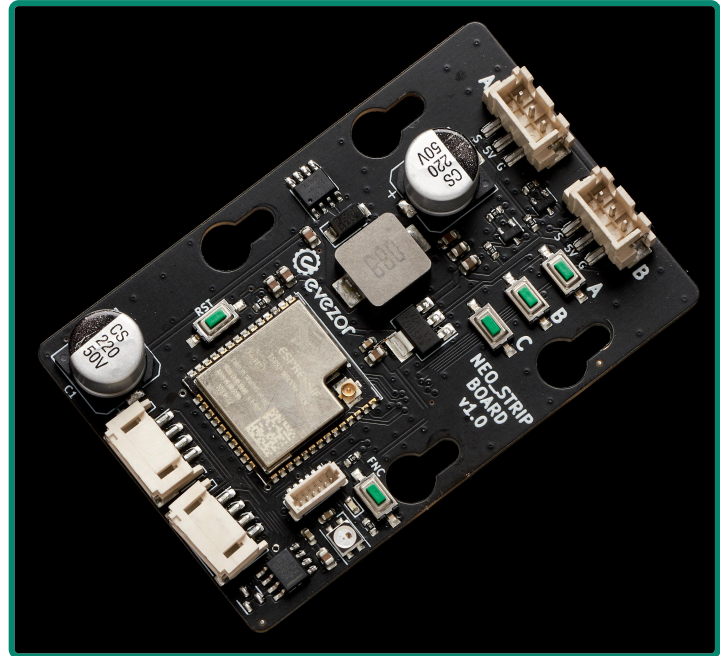


Features

- Motion control core running FluidNC
- Ribbon cable expansion ports
- SDCard slot
- qty(2) User programmable tactile buttons
- 8 Mb PSRAM
- Standard Edge Board Components
 - WIFI
 - qty(2) Edge CAN Network Ports
 - Function Button
 - Status NeoPixel
 - Hearbeat LED

Neo Strip Board

Use the Neo Strip Board to easily add color, animations, and lights to your project.

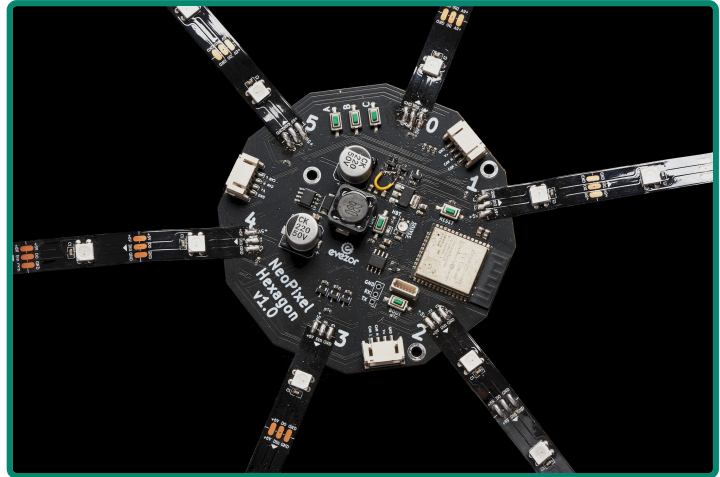


Features

- qty(2) Neopixel Ports
- Integrated 5v regulator capable of powering 30 pixels
- qty(3) User programmable tactile buttons
- Standard Edge Board Components
 - WIFI
 - qty(2) Edge CAN Network Ports
 - Function Button
 - Status NeoPixel
 - Hearbeat LED

Neo Hex Board

Use the Neo Hex Board to easily add color, animations, and lights to your project.

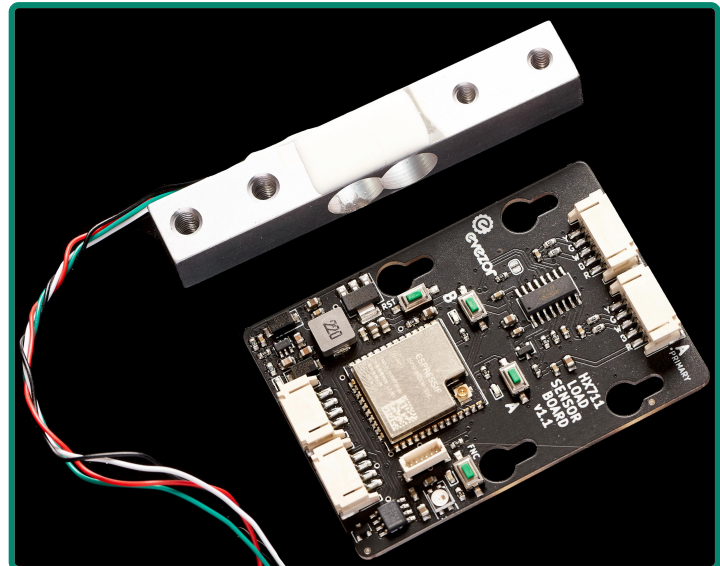


Features

- qty(6) Neopixel Ports
 - Integrated 5v regulator capable of powering 30 pixels
 - qty(3) User programmable tactile buttons
 - Standard Edge Board Components
 - WIFI
 - qty(3) Edge CAN Network Ports
 - Function Button
 - Status NeoPixel
 - Hearbeat LED
-

HX711 Load Sensor Board

Use the HX711 Load Sensor Board to add sensors to your project. Measure weights for inventory or dosing, add pressure sensors to protect machinery and more.



Features

- qty(1) Wheatstone Bridge Port
- qty(2) User programmable tactile buttons
- qty(2) User programmable leds
- Standard Edge Board Components
 - WIFI
 - qty(2) Edge CAN Network Ports
 - Function Button
 - Status NeoPixel
 - Hearbeat LED

Numberpad Board

Use the numberpad board to easily add a series of programmable inputs. Use for access control, or data entry or just to add many buttons for different tests and more.

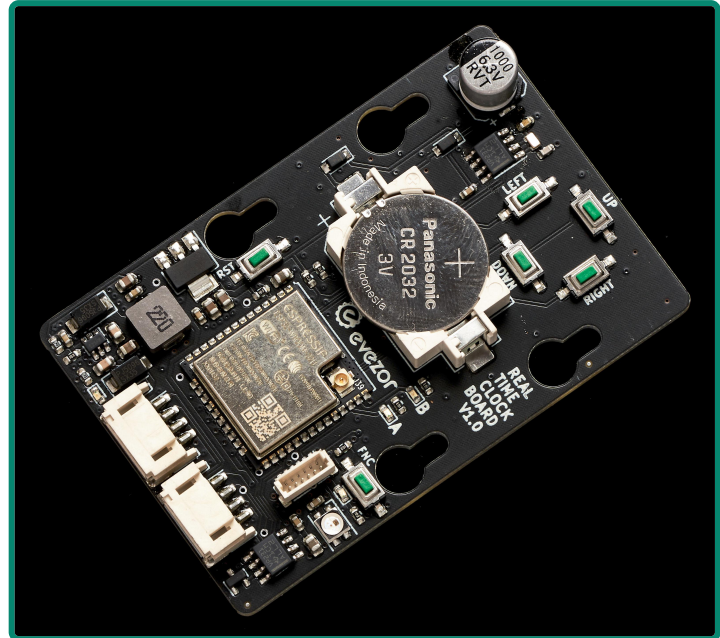


Features

- qty(12) User programmable tactile buttons
 - 5 position Neopixel strip
 - Standard Edge Board Components
 - WIFI
 - qty(2) Edge CAN Network Ports
 - Function Button
 - Status NeoPixel
 - Hearbeat LED
-

Real Time Clock Board

Use the Real Time Clock Board to keep time. With a battery backup this board will keep ticking through power outages.

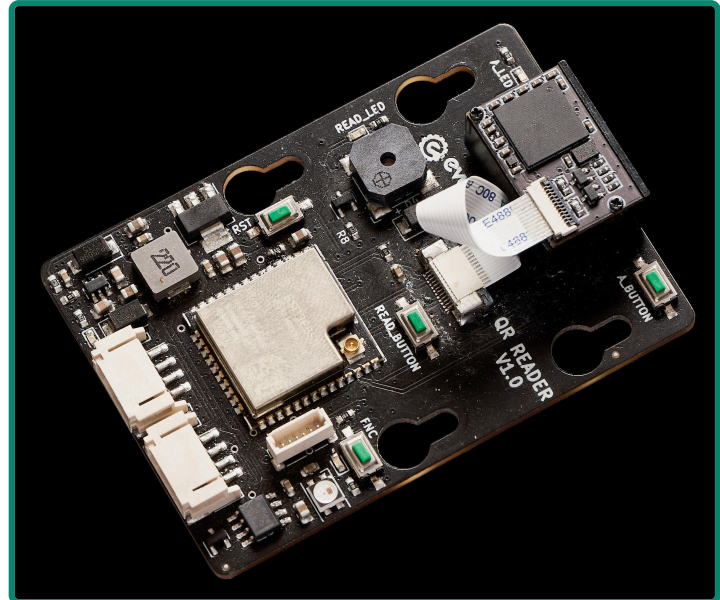


Features

- Real time clock module
- 2032 coin cell battery
- qty(4) User programmable tactile buttons
- qty(4) User programmable leds
- Standard Edge Board Components
 - WIFI
 - qty(2) Edge CAN Network Ports
 - Function Button
 - Status NeoPixel
 - Hearbeat LED

Qr Code Reader Board

Use the QR Code Reader to quickly add all the wonderful options a board like this can add. Track inventory, begin playlists or start routines and more.

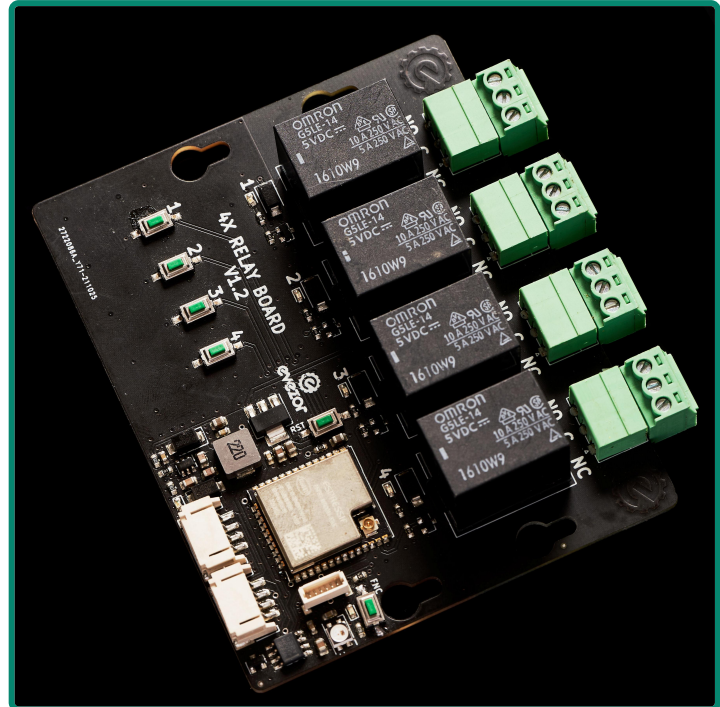


Features

- QR code reader module
 - qty(2) User programmable tactile buttons
 - User programmable led
 - User Programmable buzzer
 - Standard Edge Board Components
 - WIFI
 - qty(2) Edge CAN Network Ports
 - Function Button
 - Status NeoPixel
 - Hearbeat LED
-

4x Relay Board

Use the 4x Relay board to easily add high power outputs to your project.



Features

- qty(4) Power Relays
- qty(4) User programmable tactile buttons
- Standard Edge Board

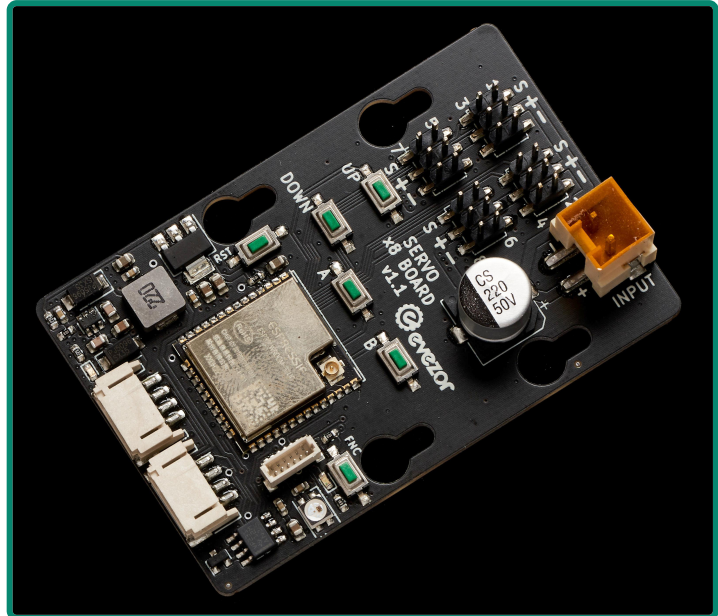
Components

- WIFI
- qty(2) Edge CAN Network Ports
- Function Button
- Status NeoPixel
- Hearbeat LED

8x Servo Board

Use the 8x Servo board to add motion to your projects. Easily connect servos to many inputs like joysticks or sensors.

Create and play back motion routines and playlists.



Features

- qty(8) Servo Headers
 - qty(4) User programmable tactile buttons
 - Standard Edge Board Components
 - WIFI
 - qty(2) Edge CAN Network Ports
 - Function Button
 - Status NeoPixel
 - Hearbeat LED
-

Stack Light Board

Use the Stack light board to add feedback on states of systems, machines and more.

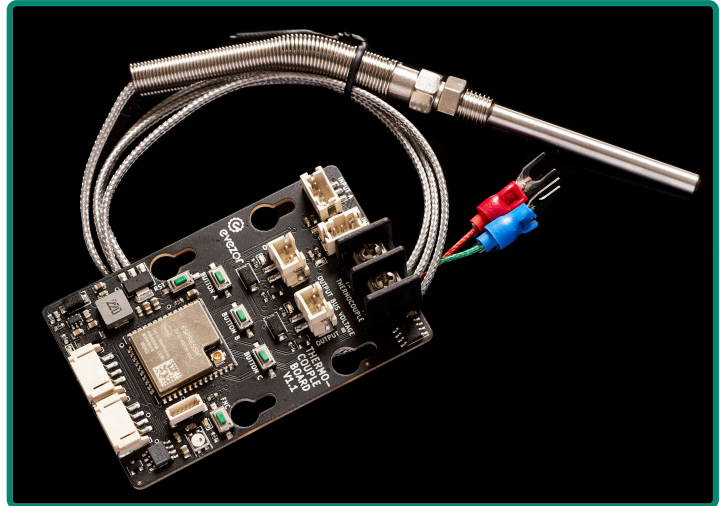


Features

- Stack light headers
 - standard with:
 - 3 position light (red, yellow, green)
 - built in buzzer
 - qty(4) User programmable tactile buttons
 - Standard Edge Board Components
 - WIFI
 - qty(2) Edge CAN Network Ports
 - Function Button
 - Status NeoPixel
 - Hearbeat LED
-

Thermocouple Board

Use the Thermocouple Board to read temperatures with a thermocouple. This board uses type-K thermocouples and reads temps at .25°C increments with readings as high as +1024°C

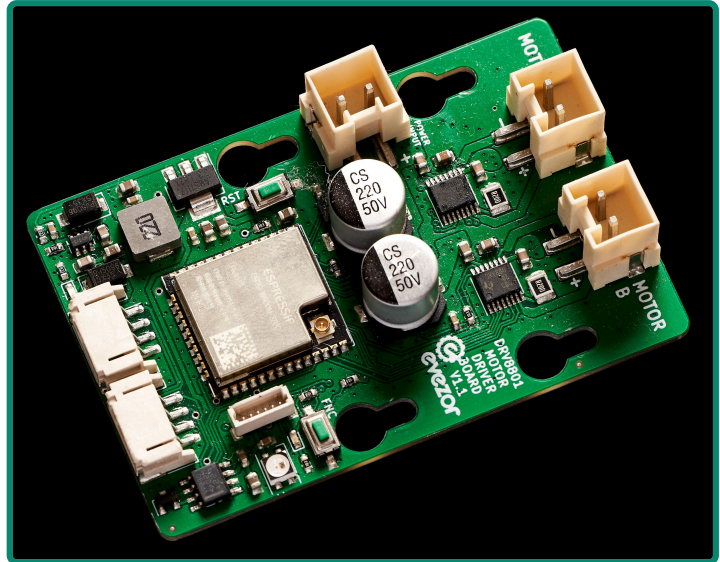


Features

- MAX6675 thermocouple module
 - qty(3) User programmable tactile buttons
 - qty(2) input ports
 - qty(2) logic level output ports
 - Standard Edge Board Components
 - WIFI
 - qty(2) Edge CAN Network Ports
 - Function Button
 - Status NeoPixel
 - Hearbeat LED
-

DRV8801 Motor Driver Board

Use the DRV8801 Motor Driver Board to add 2 high powered brushed DC motors to your project

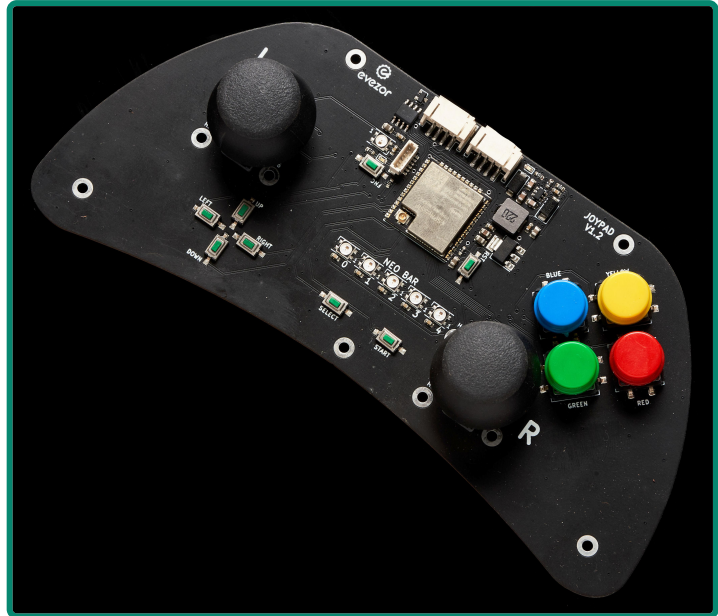


Features

- qty(2) DRV8801 motor driver modules
 - Standard Edge Board Components
 - WIFI
 - qty(2) Edge CAN Network Ports
 - Function Button
 - Status NeoPixel
 - Hearbeat LED
-

Joypad Board

Use the Joypad board to intuitively add user input to your project.

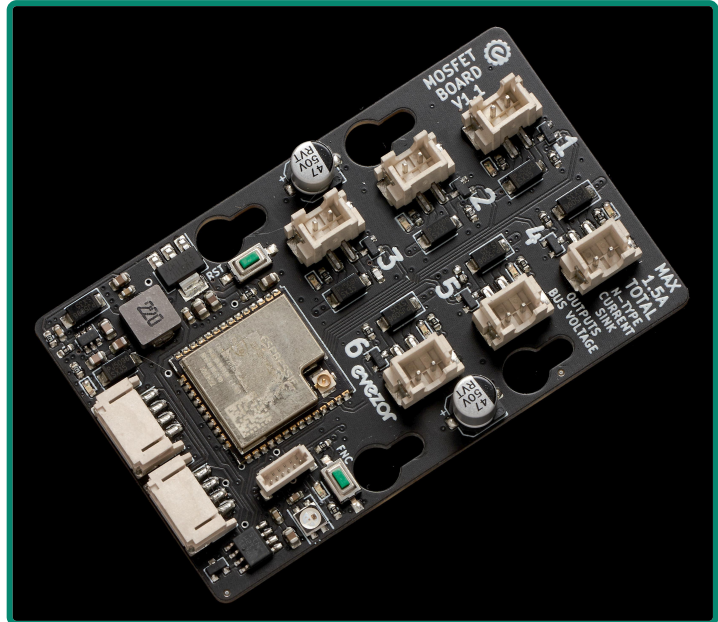


Features

- qty(2) analog joysticks
 - qty(4) colored tactile buttons
 - qty(2) tactile buttons [start, stop]
 - dpad input
 - 5 position neopixel strip
 - Standard Edge Board Components
 - WIFI
 - qty(2) Edge CAN Network Ports
 - Function Button
 - Status NeoPixel
 - Hearbeat LED
-

Small Mosfet Board

Use the Small Mosfet Board to easily interface with high power devices like small fans, leds and more.

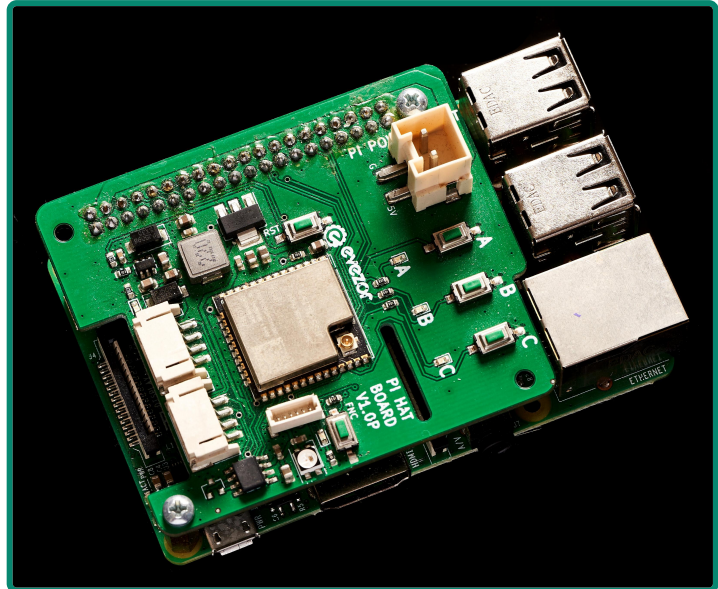


Features

- qty(8) mosfets
- Standard Edge Board Components
 - WIFI
 - qty(2) Edge CAN Network Ports
 - Function Button
 - Status NeoPixel
 - Hearbeat LED

Pi Hat Board

Use the Pi Hat Board to add the power and capability of Raspberry Pi to your project. Output HDMI for Displays or Scoreboards, play audio, and process compute intensive tasks.

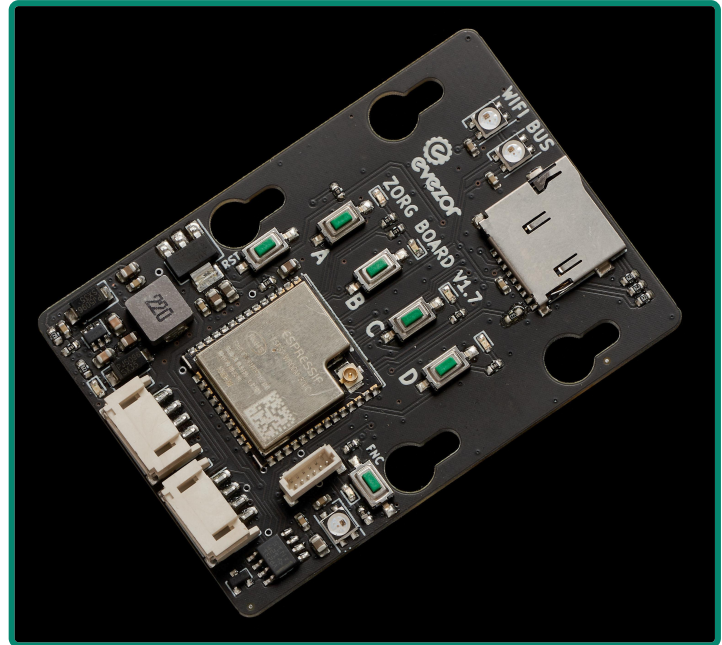


Features

- qty(3) user programmable buttons
 - qty(3) user programmable leds
 - Pi connectivity
 - UART
 - SPI
 - qty(2) generic pins
 - Standard Edge Board Components
 - WIFI
 - qty(2) Edge CAN Network Ports
 - Function Button
 - Status NeoPixel
 - Hearbeat LED
-

Zorg Board

The Zorg Board is the portal and ring leader to other boards on a network. Use Zorg to create vibrant web based graphical user interfaces and much much more.

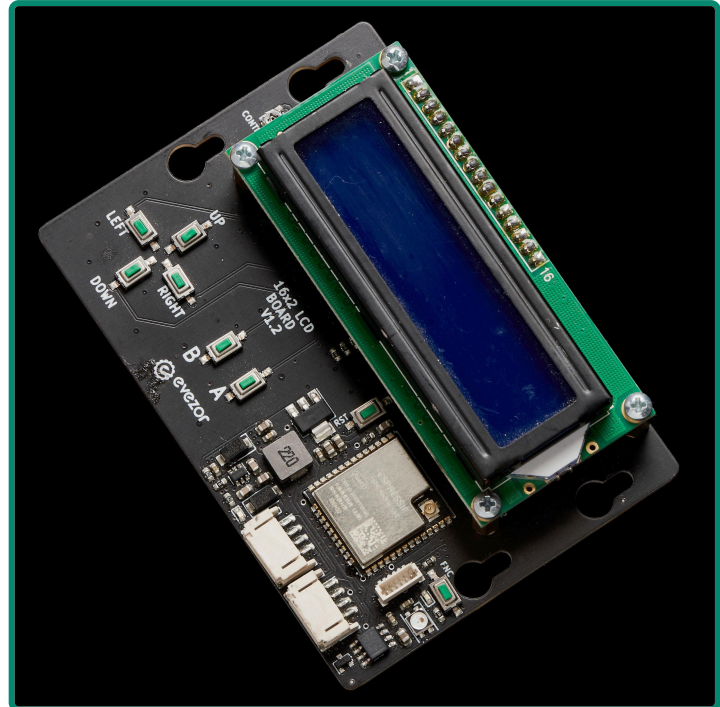


Features

- qty(4) user programmable buttons
 - qty(4) user programmable leds
 - Standard Edge Board Components
 - WIFI
 - qty(2) Edge CAN Network Ports
 - Function Button
 - Status NeoPixel
 - Hearbeat LED
-

16x2 LCD Board

Use the 16x2 LCD Board to create menus for machines, display states, create user interfaces and more.

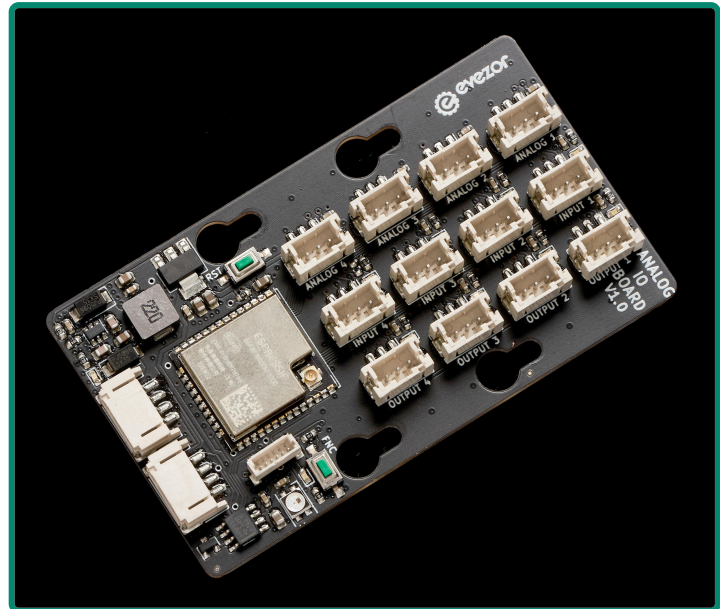


Features

- 16x2 LCD Module
- qty(6) user programmable buttons
- Standard Edge Board Components
 - WIFI
 - qty(2) Edge CAN Network Ports
 - Function Button
 - Status NeoPixel
 - Heartbeat LED

Analog IO Board

Use the Analog IO Board to easily add many types of inputs and outputs to your project.



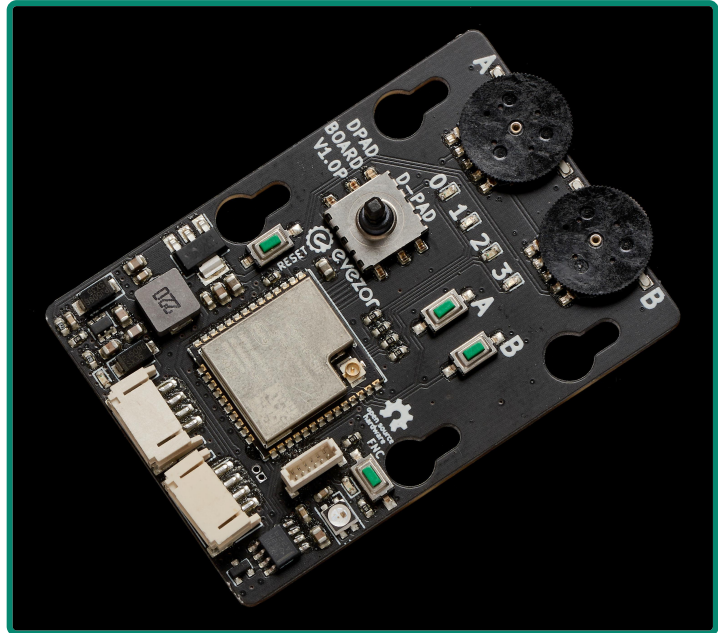
Features

- qty(4) digital input ports with LED feedback
- qty(4) digital output ports with LED feedback
- qty(4) analog input ports
- Standard Edge Board Components
 - WIFI
 - qty(2) Edge CAN Network Ports
 - Function Button
 - Status NeoPixel
 - Hearbeat LED

note: pins may be reconfigured with jumpers to different types

Dpad Board

Use the Dpad Board to easily add user input to your project. With 2 integrated potentiometers, easily set speeds or thresholds to routines and orchestrations.



Features

- qty(2) potentiometers for analog output
- qty(4) user programmable leds
- qty(2) user programmable buttons
- Dpad module with [up, down, left, right, push]
- Standard Edge Board Components
 - WIFI
 - qty(2) Edge CAN Network Ports
 - Function Button
 - Status NeoPixel
 - Hearbeat LED

DMX with Real Time Clock Board

Use the DMX with Real Time Clock Board to add DMX output to interface create lightshows, with smoke machines and all other devices that speak DMX. With integrated realtime clock ensure playlists happen on time every time.

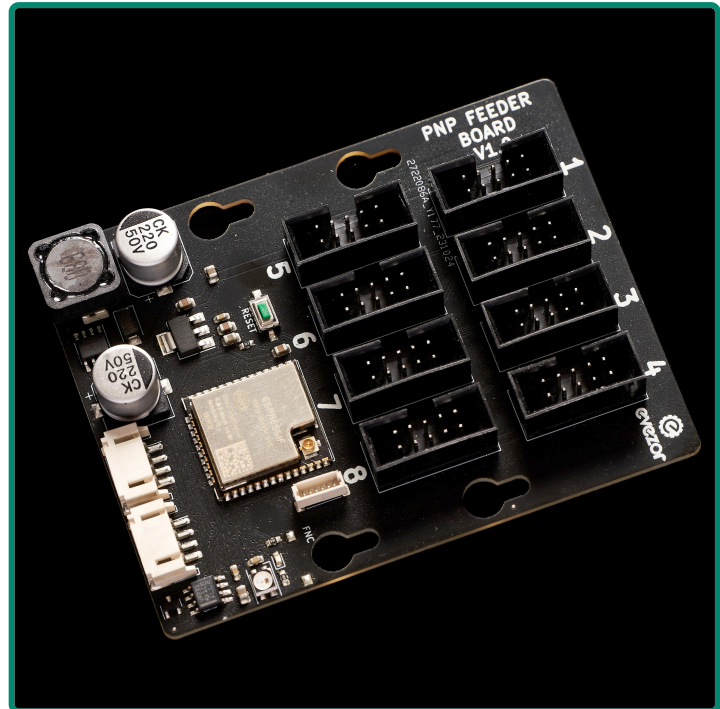


Features

- DMX input and output XLR ports
 - SD card slot
 - Realtime clock module with coincell battery backup
 - LCD display
 - qty(4) user programmable buttons
 - Solid state relay
 - qty(4) user programmable button
 - Standard Edge Board Components
 - WIFI
 - qty(2) Edge CAN Network Ports
 - Function Button
 - Status NeoPixel
 - Hearbeat LED
-

PNP Feeder Board

The PNP Feeder Board is used to control up to qty(8) smt feeders

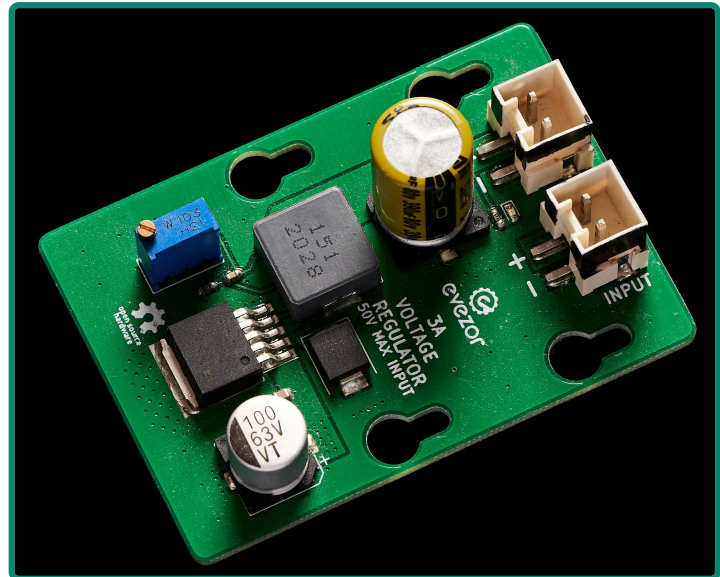


Features

- qty(8) 10-pin ide headers for pnp_feeders
 - Standard Edge Board Components
 - WIFI
 - qty(2) Edge CAN Network Ports
 - Function Button
 - Status NeoPixel
 - Hearbeat LED
-

3A Regulator Board

The 3A Regulator Board will deliver 3 amps continuous output at a variable voltage set by the built in potentiometer

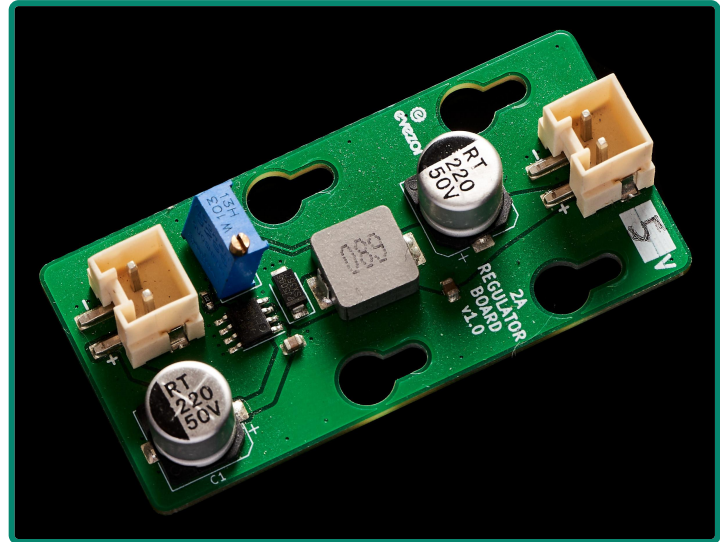


Features

- pluggable terminal power input
- pluggable terminal power output

2A Regulator Board

The 2A Regulator Board will deliver 2 amps continuous output at a variable voltage set by the built in potentiometer

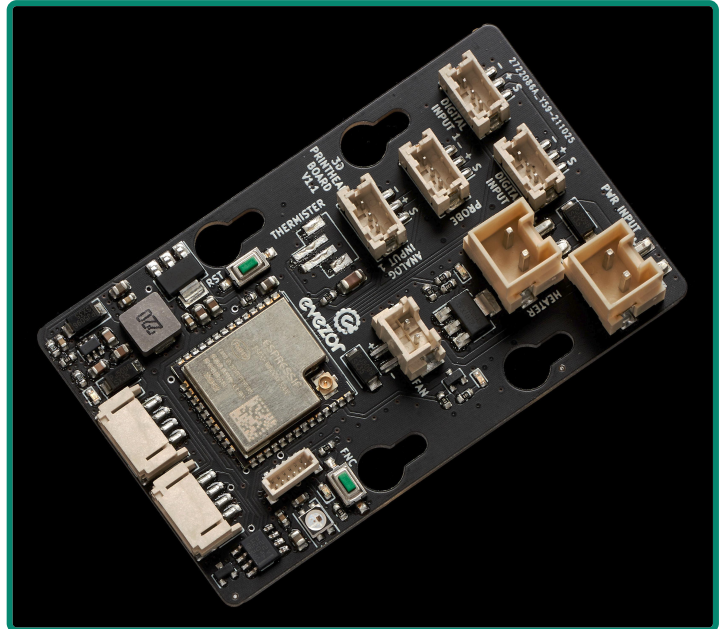


Features

- pluggable terminal power input
- pluggable terminal power output

3D Printhead Board

The 3D Printhead Board can be used to add a hotend with thermister input, high power mosfet output and a low power mosfet output for a fan. The board also comes with a few additional digital and analog input ports with the standard 3-pin PH port.

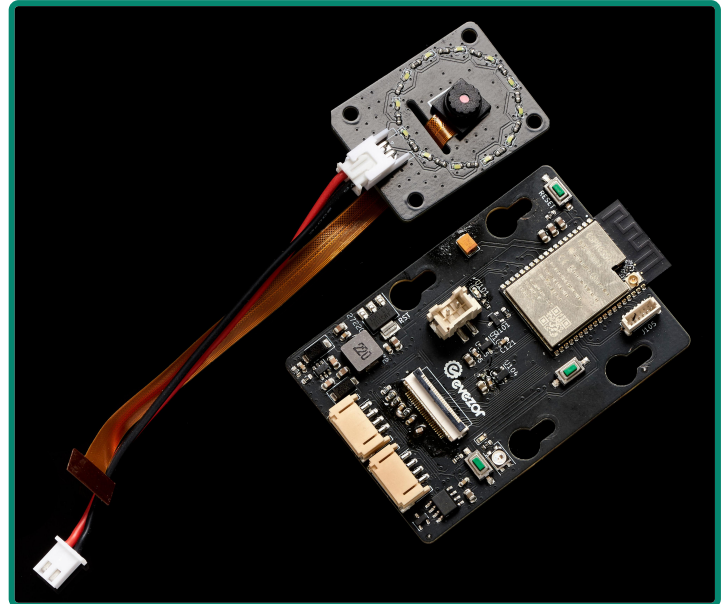


Features

- thermister analog input port
- low power mosfet fan port
- high power hotend mosfet
- qty(1) analog input
- qty(3) digital inputs
- Standard Edge Board Components
 - WIFI
 - qty(2) Edge CAN Network Ports
 - Function Button
 - Status NeoPixel
 - Hearbeat LED

Camera Board

The Camera Board comes standard with a 2MP OV2640 camera



Features

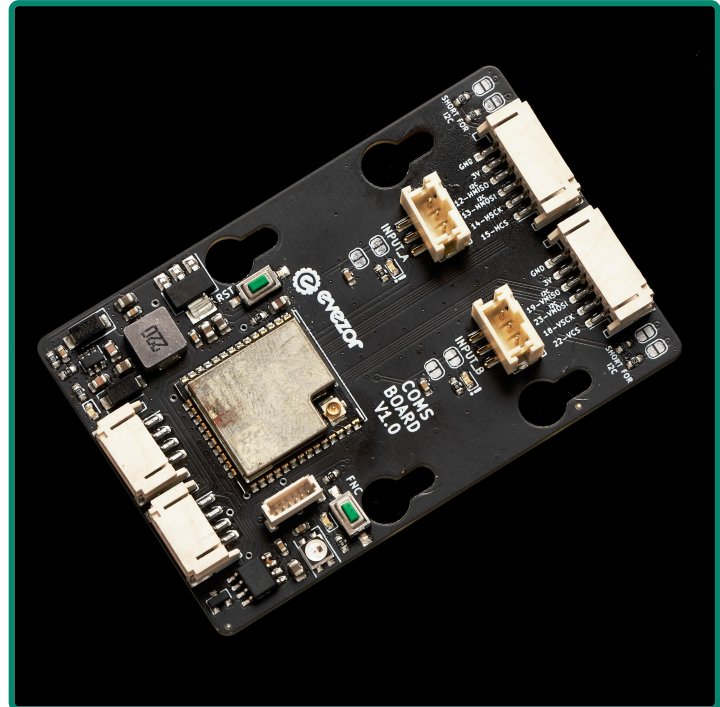
- OV2640 Camera
- Led Light Ring
- Standard Edge Board

Components

- WIFI
 - qty(2) Edge CAN Network Ports
 - Function Button
 - Status NeoPixel
 - Hearbeat LED
-

Coms Board

The Coms Board comes standard 2 6 pin ph connectors. I2C pins are easily connected to pullup resistors with solderable jumpers. This board also comes with 2 generic digital input ports

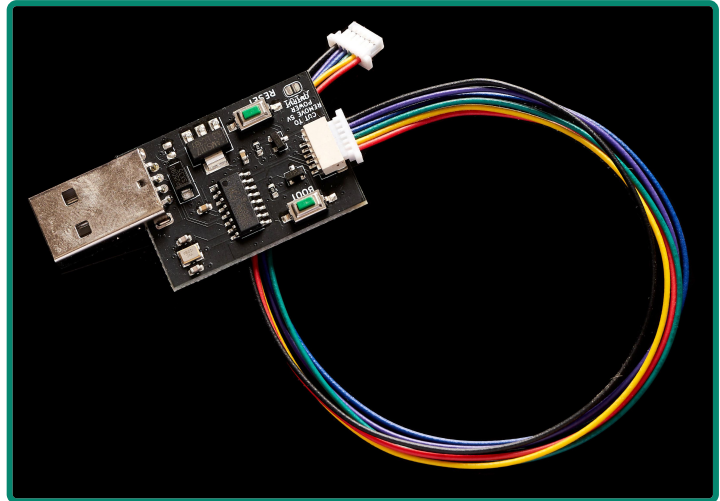


Features

- qty(2) coms ports with solderable i2c pullups
- qty(2) digital input ports
- Standard Edge Board Components
 - WIFI
 - qty(2) Edge CAN Network Ports
 - Function Button
 - Status NeoPixel
 - Hearbeat LED

FTDI Board

The FTDI Board is used to connect any board to a usb port giving access to the serial port for debugging and flashing new programs

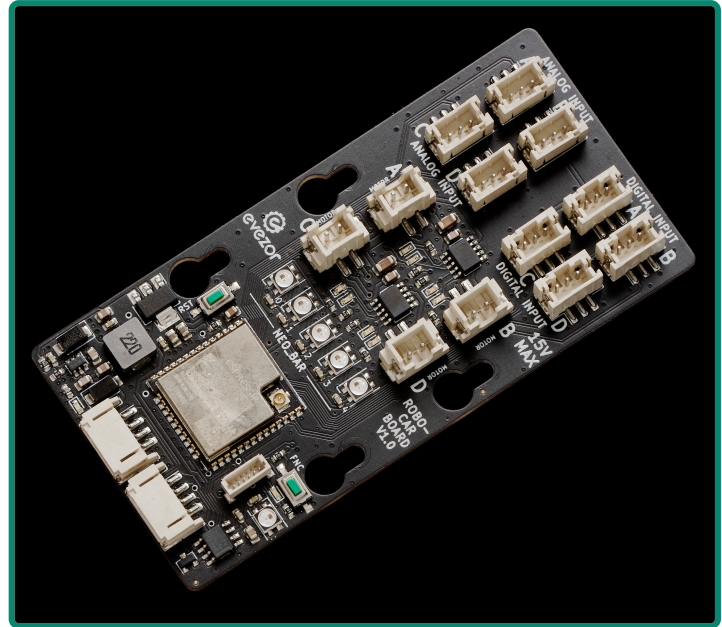


Features

- Type A USB port
- standard 6 pin sh ftdi connection

Small Motor Driver Board

The Small Motor Driver Board can control up to 4 small motors up to 1A each, respecting the board's overall limit of 2A

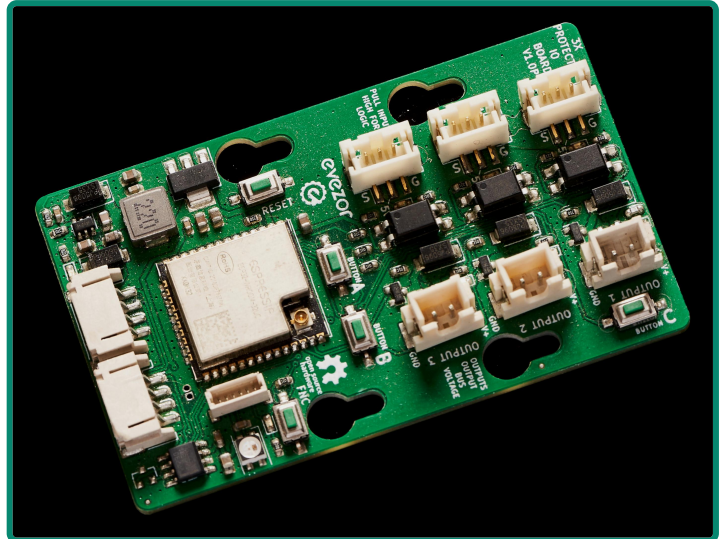


Features

- qty(4) motor outputs with led feedback
- qty(4) digital input ports
- qty(4) analog input ports
- 5 position neopixel strip
- Standard Edge Board Components
 - WIFI
 - qty(2) Edge CAN Network Ports
 - Function Button
 - Status NeoPixel
 - Hearbeat LED

Opto IO Board

The Opto IO Board comes standard with 3 optically isolated inputs and 3 low power mosfet outputs



Features

- qty(3) optically isolated input ports
 - qty(3) low power mosfet output ports
 - Standard Edge Board Components
 - WIFI
 - qty(2) Edge CAN Network Ports
 - Function Button
 - Status NeoPixel
 - Heartbeat LED
-